



THE SOFIGROUP
LUXURY REAL ESTATE SALES & MARKETING

the **extraordinary** in real estate

WWW.THESOFIGROUP.COM

info@thesofigroup.com

PHONE: 305.433.2040

FAX: 305.489.3222

YACHT CLUB AT PORTOFINO

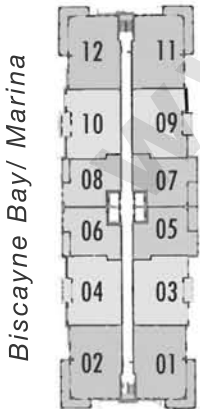
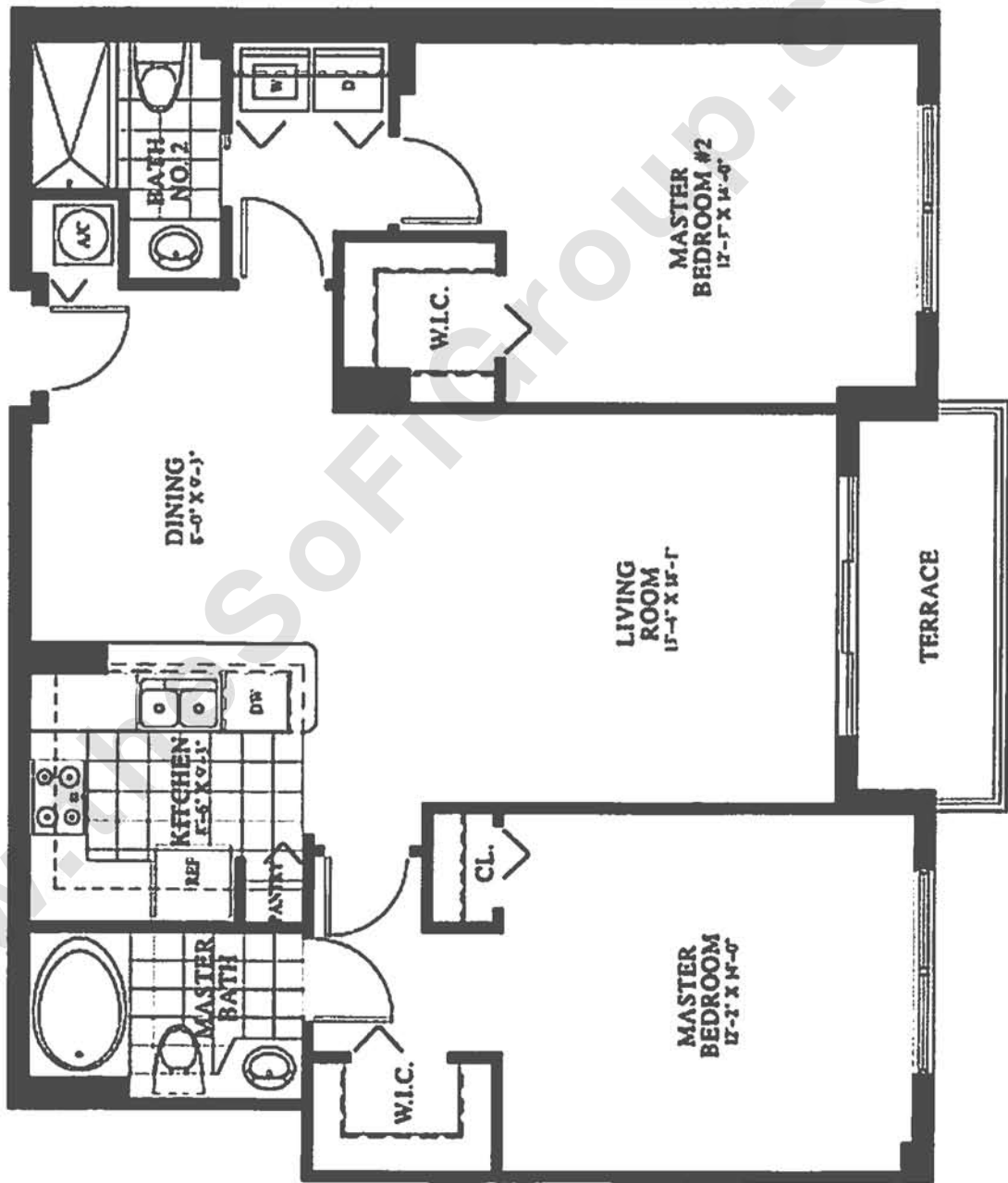
Tropez Floorplan - Lines 03, 04, 09, 10

2 Bed, 2 Bath

Interior: 1,080 Sq Ft (100 Sq M)

Balcony: 67 Sq Ft (6 Sq M)

Total: 1,147 Sq Ft (107 Sq M)



Atlantic Ocean views



All dimensions are approximate. Floor plans may vary from unit to unit.