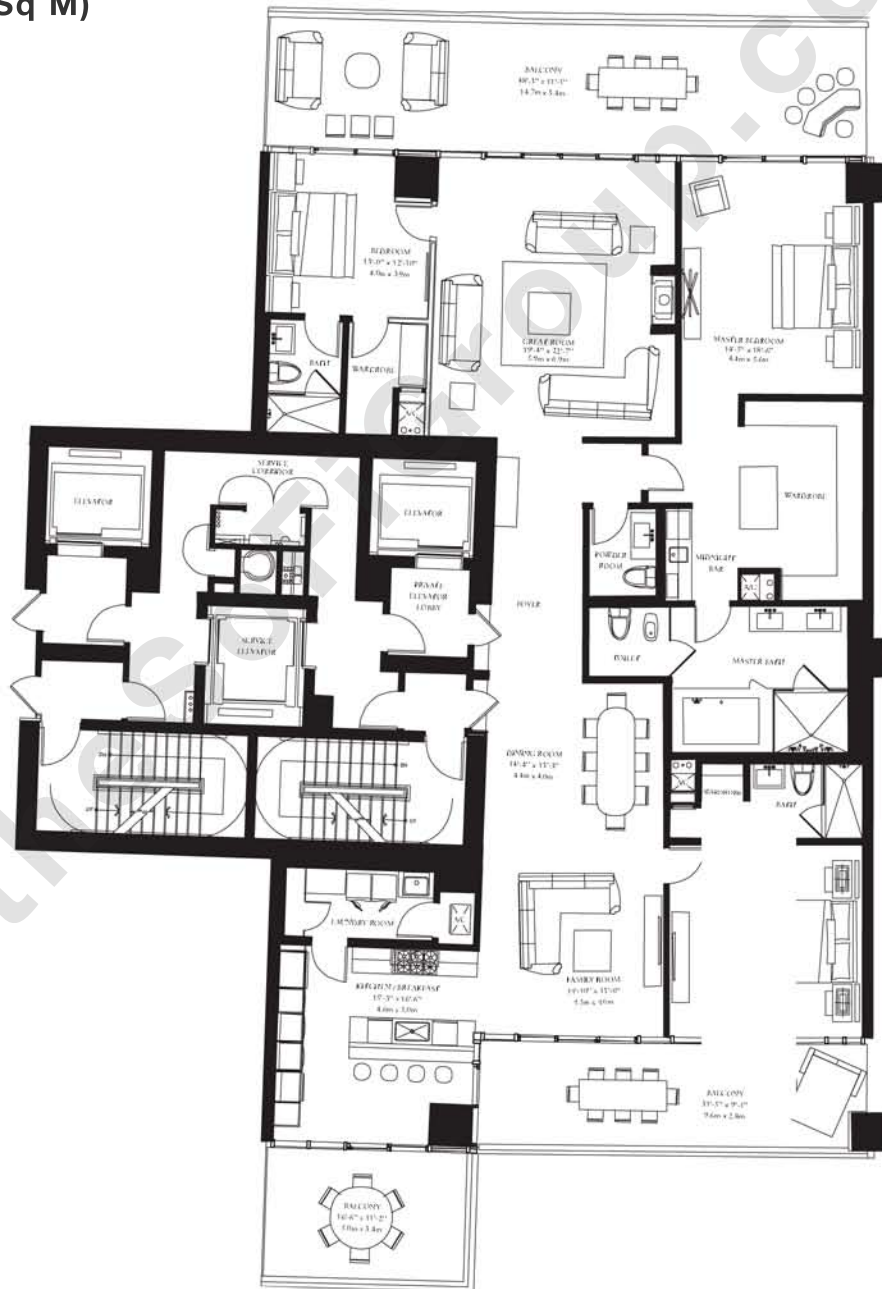


ST REGIS BAL HARBOUR
North - Residential Tower - Residence B Mod
Floors 4 - 11
3 Bed, 3.5 Bath
Interior space: 3,133 sq ft (291.1 Sq M)
Balcony: 1,008 sq ft (93.6 Sq M)
Total: 4,141 sq ft (384.7 Sq M)



ST REGIS
 BAL HARBOUR
 THE RESIDENCES



LEVELS 4-11
 COLLINS AVENUE

